

KTZ8868 + 2 x KTC2115 EVB Application Circuit

Change list(04/13):
 1. CREG: 10uF -> 47uF
 2. CNEG: 10uF -> 22uF
 3. Netlabel: "CBoost_A" -> "VBoost_A"; "CBoost_B" -> "VBoost_B"
 4. Add 2 pull-down resistors: "R_Boost_A" & "R_Boost_B"

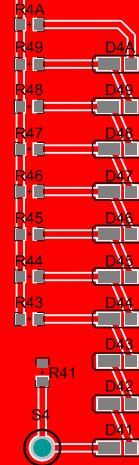
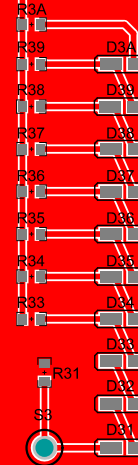
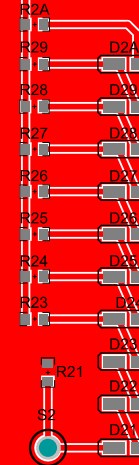
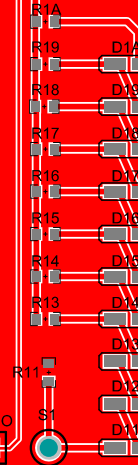
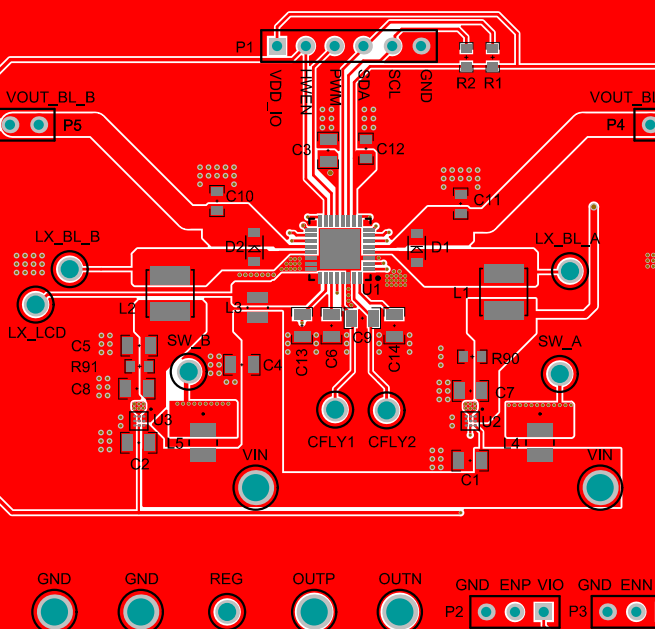
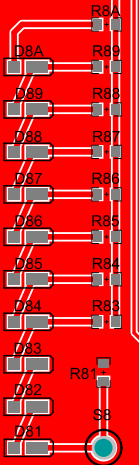
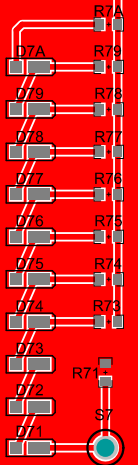
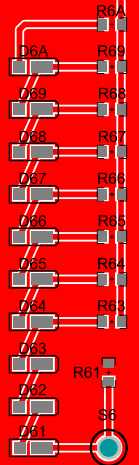
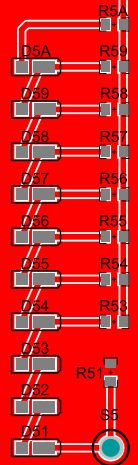
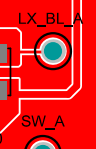
Title: KTZ8868EUAD-MMEV01			Kinetic Technologies 6399 San Ignacio Ave San Jose, Ca 95119 USA
Size: A2	Number: 1	Revision: 1.0	
Date: 1/21/2024	Time: 1:37:29PM	Sheet: 1 of 1	
Drawn By: Ricardo Portak			



KTZ8868EUAD-MMEV01

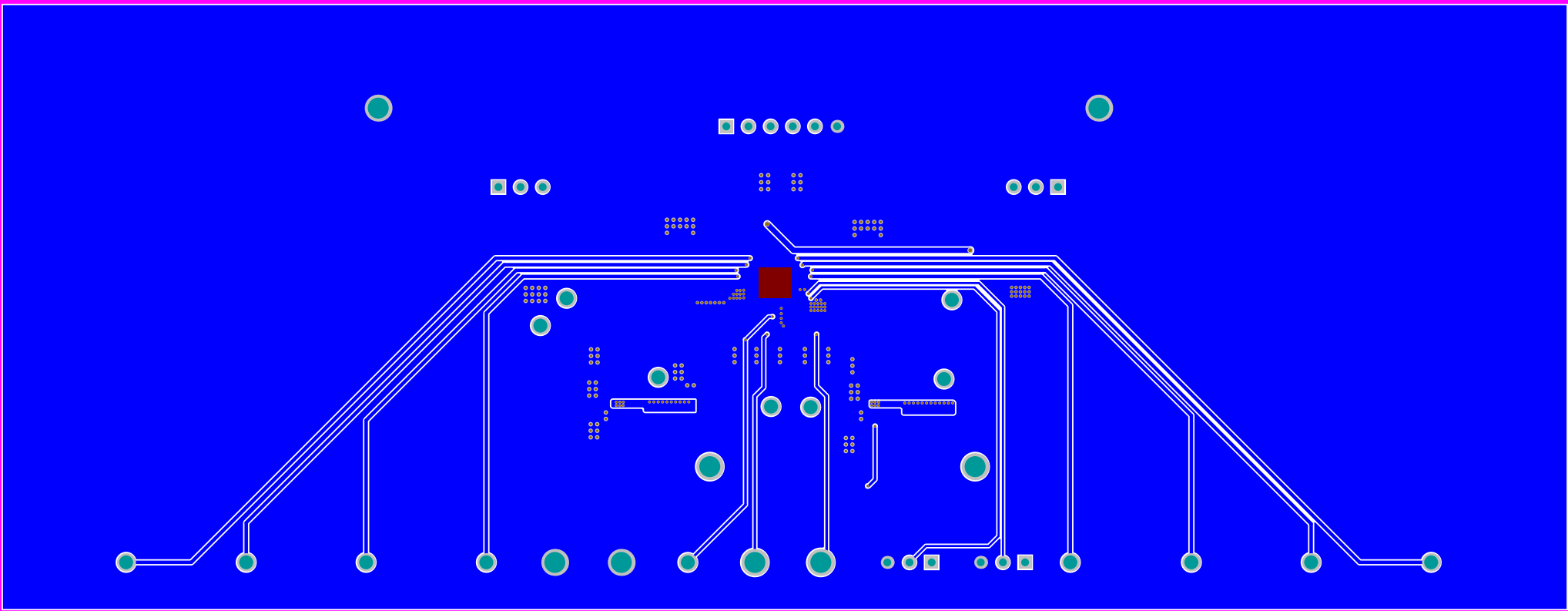


Kinetic Technologies
www.kinet-ic.com



70.00mm

180.00mm



70.00mm

180.00mm