

Ideal Diode and Load Switch Controller with Reverse Input Protection

Brief Description

The KTS1900Q Ideal Diode Evaluation (EVAL) Kit is used to demonstrate and evaluate the KTS1900Q functionality, performance, and PCB layout. This evaluation board utilizes a typical Ideal Diode application with 12V Input, 5A output, having power and signal I/O connections with an array of test points for signal observation.

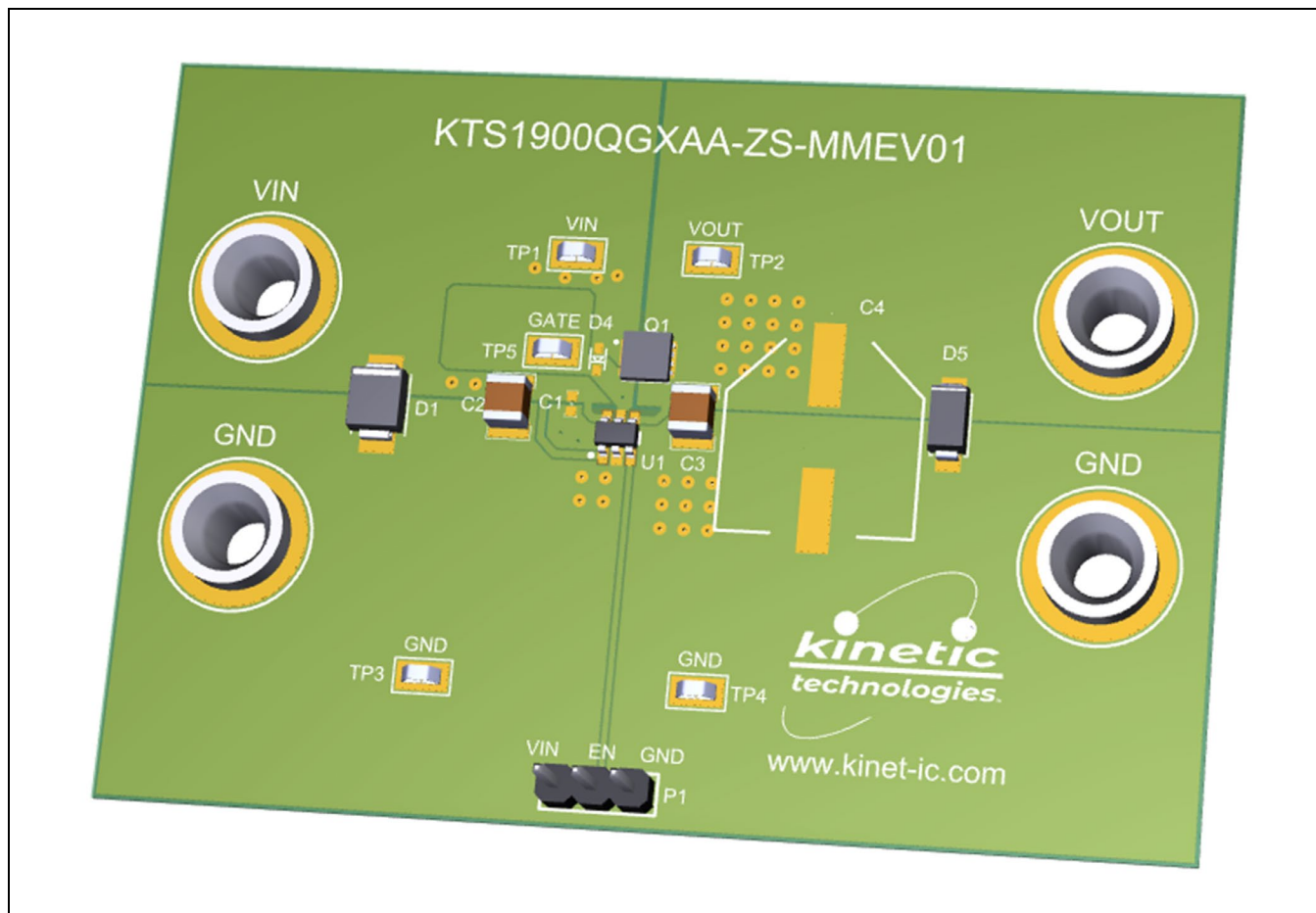
The KTS1900Q device is an Ideal Diode and Load Switch Controller with Reverse Input Protection.

It is optimized for both Ideal Diode and Load Switch applications. Please note that there is an alternative KTS1900Q kit created for the Load Switch Application at 12V Input, 10A output. Contact a Kinetic Technologies sales representative for further details.

Ordering Information

Part Number	Description	IC Package
KTS1900QGXA-ZS-MMEV01	KTS1900Q Ideal Diode EVAL Kit	SOT23-6



3D CAD Image



EVAL Kit Physical Contents

Item #	Description	Quantity
1	KTS1900Q Ideal Diode Evaluation board fully assembled PCB	1
2	Anti-static bag	1
3	KTS1900Q Ideal Diode Quick Start Guide, printed 1 page (A4 or US Letter)	1
4	EVAL Kit box	1

QR Links for Documents

IC Datasheet	EVAL Kit Landing Page
 https://www.kinet-ic.com/kts1900q/	 https://www.kinet-ic.com/kts1900qgxaa-zs-mmev01/

User-Supplied Equipment

Required Equipment

1. DC Power Supply Equipment that can source at least 12V voltage and 5A current.
2. Digital Multimeters, two required – used to measure input/output voltages.
3. Load – any of the following may be used:
 - a. Electronic load capable of sinking 12V at 5A (60W).
 - b. Power Resistor – 2.4Ω /12V/60W or greater value is required.
4. Test leads:
 - a. One pair of banana-to-clip test leads to connect a voltmeter to the VIN and GND test points.
 - b. One pair of banana-to-clip test leads to connect a voltmeter to the VIN and VOUT test points.
 - c. One pair of banana-jack test leads to connect VOUT/GND to an electronic load.

Optional Equipment

1. Oscilloscope with 4x probes to monitor waveforms

Recommended Operating Conditions

Symbol	Description	Conditions	Min	Typ	Max	Units
VIN	DC Input	VIN to GND	4.2	12	30	V
IO	Loaded Output Current	VOUT to GND	0	5	10	A
VSDREG	Regulated Source (VIN) to Drain (VOUT) Voltage	VIN to VOUT, IO=5A	25	45	65	mV

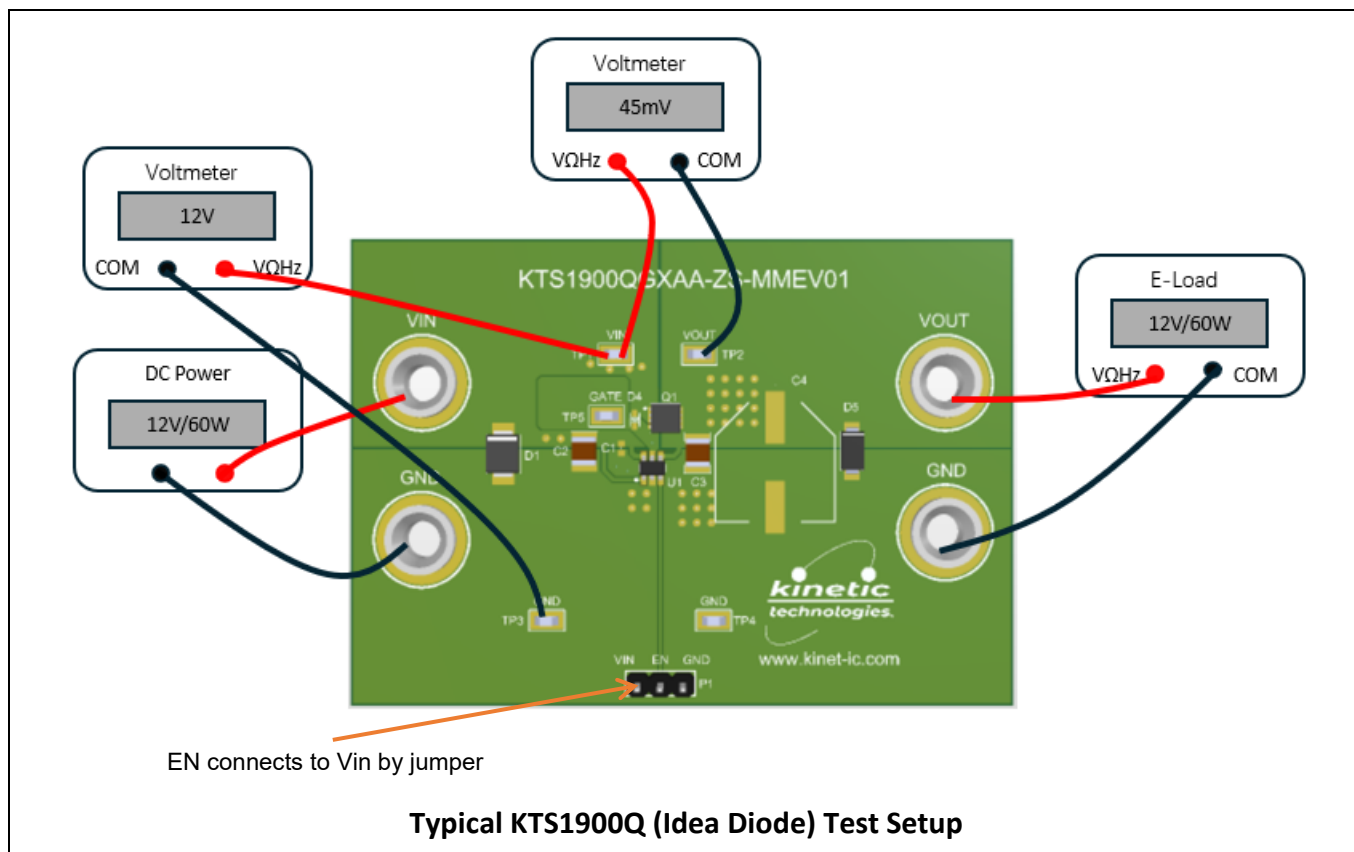
Quick Start Procedures

The typical input voltage of this board is set to 12V. The voltage drop from VIN to VOUT is regulated to around 45mV by Kinetic Technologies KTS1900Q controller.

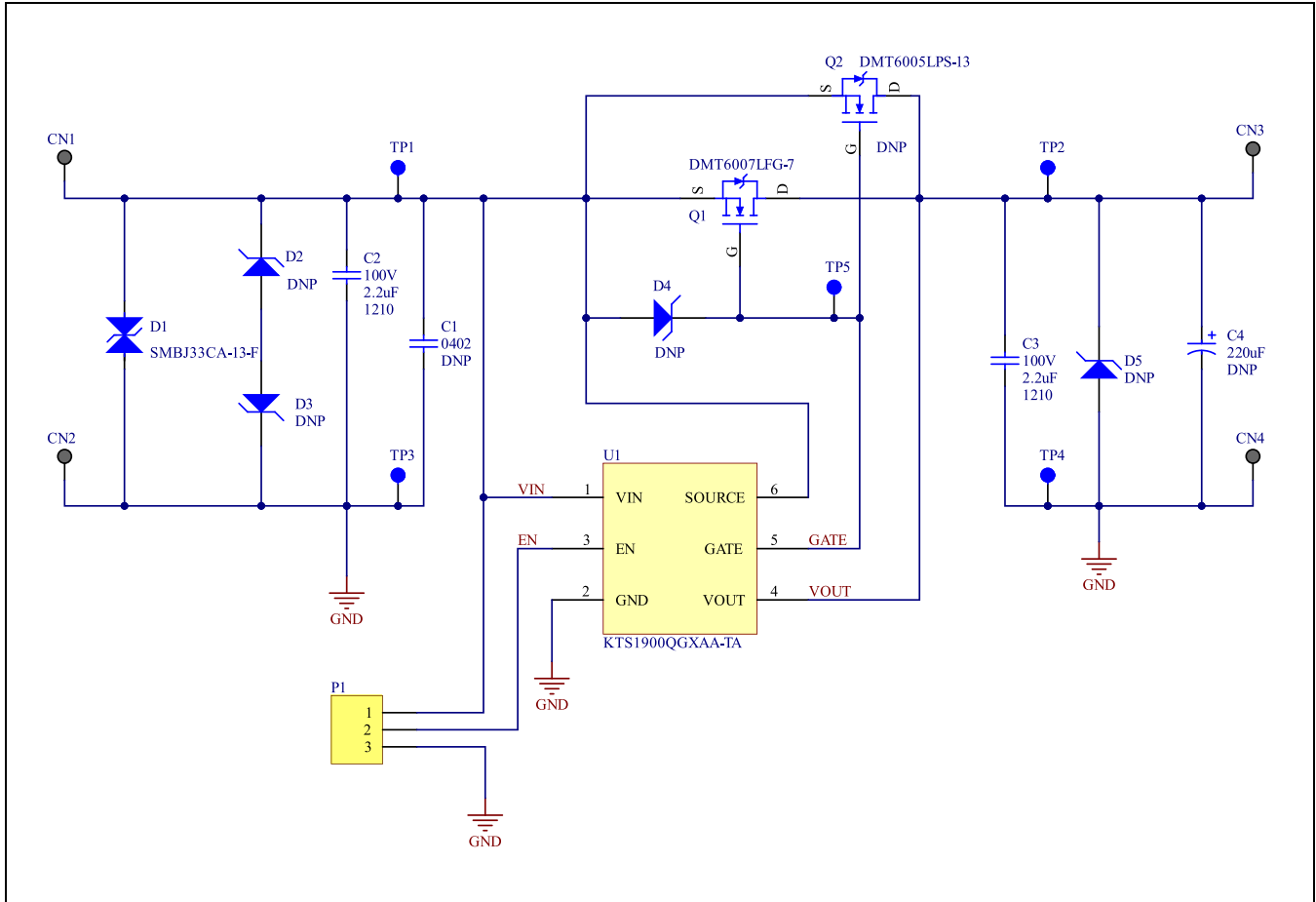
1. Connect one pair of power cables to the VIN connectors (VIN and GND) of EVAL Kit.
2. Before connecting the EVAL Kit to the DC power supply, turn on the supply and adjust the voltage as close to 0V as possible. Then disable the power supply output or turn the supply off. While disabled or off, connect the VIN power cables' ends to the power supply.
3. Connect one voltage meter to the VIN and GND test pins, one voltage meter to the VIN and VOUT test pins.
4. Connect the load to the output connectors (VOUT and GND). Set the load to 5A.
5. Turn on the DC Power Supply and very slowly ramp its voltage to an appropriate voltage, such as 12V (4.2V ~ 30V). While ramping VIN slowly, use the power supply's output current indication (or a digital multimeter) to monitor the VIN current. If the current becomes high, reduce the VIN voltage quickly to prevent damage. Then inspect the setup for any wiring errors.
6. Verify VOUT and the voltage drop from the VIN to VOUT.
VOUT is regulated to typical 11.955V, the typical voltage drop from VIN to VOUT is 45mV at 12V Input condition.

Typical Test Setup

The figure below shows a typical setup for KTS1900Q Ideal Diode EVB. Input voltage can be applied in the connectors of VIN and GND.



Electrical Schematic



Bill of Materials

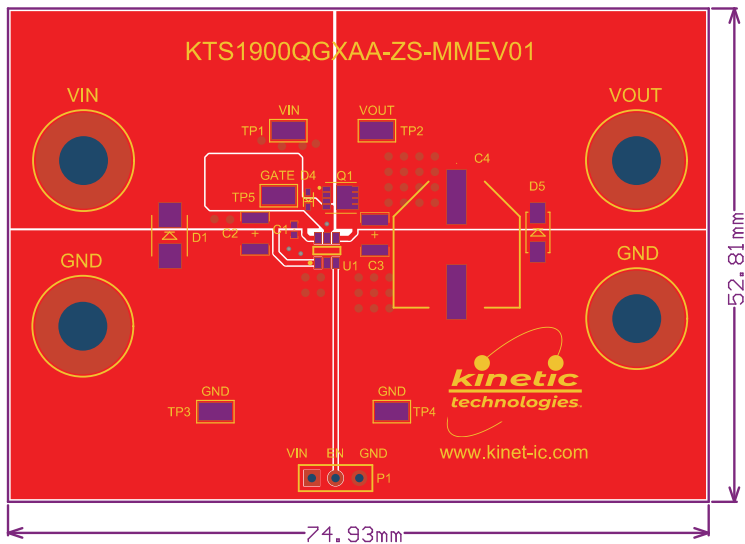
Designator	Description	Quantity	Value	Manufacturer	Manufacturer Part Number
C1	CAP CER 0402 DNP	1	DNP		
C2, C3	CAP CER 2.2 μ F 100V X7S 1210	2	2.2 μ F	Samsung	CL32B225KCJSNNE
C4	CAP ALUM 220 μ F 20% 63V SMD DNP	1	DNP		
CN1, CN2, CN3, CN4	CONN BANANA JACK SOLDER	4		Keystone Electronics	575-4
D1	TVS DIODE 33VWM 53.3VC SMB	1		Diodes Incorporated	SMBJ33CA-13-F
D2	TVS DIODE 58VWM 93.6VC SMB DNP	1	DNP		
D3	TVS DIODE 24VWM 38.9VC SMB DNP	1	DNP		
D4	DIODE ZENER 12V 150MW SOD523 DNP	1	DNP		
D5	TVS DIODE 58VWM 93.6VC DO214AC DNP	1	DNP		
P1	CONN HEADER VERT 3POS 2.54MM	1		Sullins	PREC003SAAN-RC
Q1	MOSFET N-CH 60V 15A PWRDI3333	1		Diodes Incorporated	DMT6007LFG-7
Q2	MOSFET N-CHA 60V 17.9A POWERDI DNP	1	DNP		
TP1, TP2, TP3, TP4, TP5	PC TEST POINT MINIATURE	5		Keystone Electronics	5015
U1	Ideal Diode and Load Switch Controller with Reverse Input Protection	1		Kinetic Technologies	KTS1900QGXA-TA

Physical Access

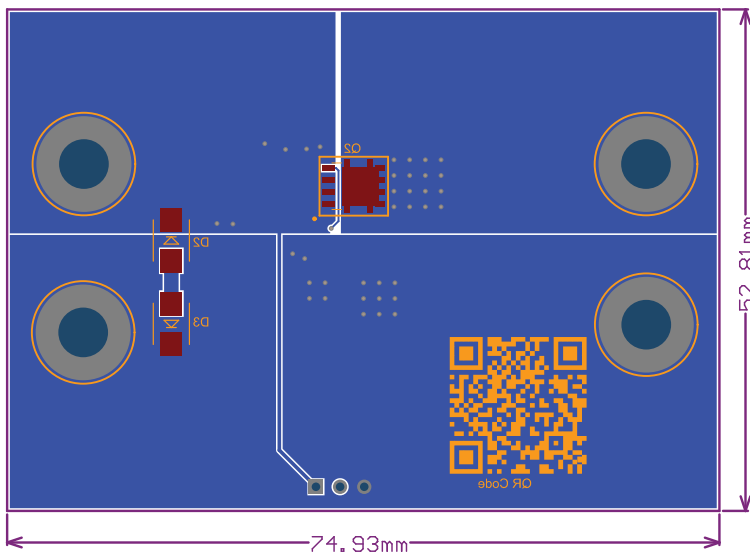
Connector	Description
VIN	Positive DC power supply input
GND	Negative DC power supply input
VOUT	Positive output
GND	Negative output

Printed Circuit Board (PCB)

Top Side Layout/Routing



Bottom Layer Routing



Test Setup

1. The “Typical Test Setup Diagram” shows a typical setup for the KTS1900Q EVAL board. Input voltage can be applied as described in the “Recommended Operating Conditions” Table
2. When a DC power supply is used to source power, the KTS1900Q EVAL board will start up at typical 12V Input. The typical 45mV regulated voltage may be observed on VIN and VOUT test pins
3. Digital multimeters may be used to monitor the input voltage level (VIN and GND test points) and the regulated voltage level (VIN and VOUT test points)
4. A load may be applied to the output at VOUT and GND connectors. The typical load is 5A.

Important Notices

Legal notice

Copyright © Kinetic Technologies. Other names, brands and trademarks are the property of others.

Kinetic Technologies assumes no responsibility or liability for information contained in this document. Kinetic Technologies reserves the right to make corrections, modifications, enhancements, improvements, and other changes to its products and services at any time and to discontinue any product or services without notice. The information contained herein is believed to be accurate and reliable at the time of printing.

Reference design policy

This document is provided as a design reference and Kinetic Technologies assumes no responsibility or liability for the information contained in this document. Kinetic Technologies reserves the right to make corrections, modifications, enhancements, improvements, and other changes to this reference design documentation without notice.

Reference designs are created using Kinetic Technologies' published specifications as well as the published specifications of other device manufacturers. This information may not be current at the time the reference design is built. Kinetic Technologies and/or its licensors do not warrant the accuracy or completeness of the specifications, or any information contained therein.

Kinetic Technologies does not warrant that the designs are production worthy. Customer should completely validate and test the design implementation to confirm the system functionality for the end use application.

Kinetic Technologies provides its customers with limited product warranties, according to the standard Kinetic Technologies terms and conditions.

For the most current product information visit us at www.kinet-ic.com

Life support policy

LIFE SUPPORT: KINETIC TECHNOLOGIES' PRODUCTS ARE NOT DESIGNED, INTENDED, OR AUTHORIZED FOR USE AS COMPONENTS IN LIFE SUPPORT DEVICES OR SYSTEMS. NO WARRANTY, EXPRESS OR IMPLIED, IS MADE FOR THIS USE. AUTHORIZATION FOR SUCH USE SHALL NOT BE GIVEN BY KINETIC TECHNOLOGIES, AND THE PRODUCTS SHALL NOT BE USED IN SUCH DEVICES OR SYSTEMS, EXCEPT UPON THE WRITTEN APPROVAL OF THE PRESIDENT OF KINETIC TECHNOLOGIES FOLLOWING A DETERMINATION BY KINETIC TECHNOLOGIES THAT SUCH USE IS FEASIBLE. SUCH APPROVAL MAY BE WITHHELD FOR ANY OR NO REASON.

"Life support devices or systems" are devices or systems which (1) are intended for surgical implant into the human body, (2) support or sustain human life, or (3) monitor critical bodily functions including, but not limited to, cardiac, respirator, and neurological functions, and whose failure to perform can be reasonably expected to result in a significant bodily injury to the user. A "critical component" is any component of a life support device or system whose failure to perform can be reasonably expected to cause the failure of the life support device or system, or to affect its safety or effectiveness.

SUBSTANCE COMPLIANCE

Kinetic Technologies IC products are compliant with RoHS, formally known as Directive 2002/95/EC of the European Parliament and of the Council of 27 January 2003 on the restriction of the use of certain hazardous substances in electrical and electronic equipment. However, this evaluation kit does not fall within the scope of the EU directives regarding electromagnetic compatibility, restricted substances (RoHS), recycling (WEEE), FCC, CE or UL, and may not meet the requirements of these or related directives. To the best of our knowledge the information is true and correct as of the date of the original publication of the information. Kinetic Technologies bears no responsibility to update such statement.